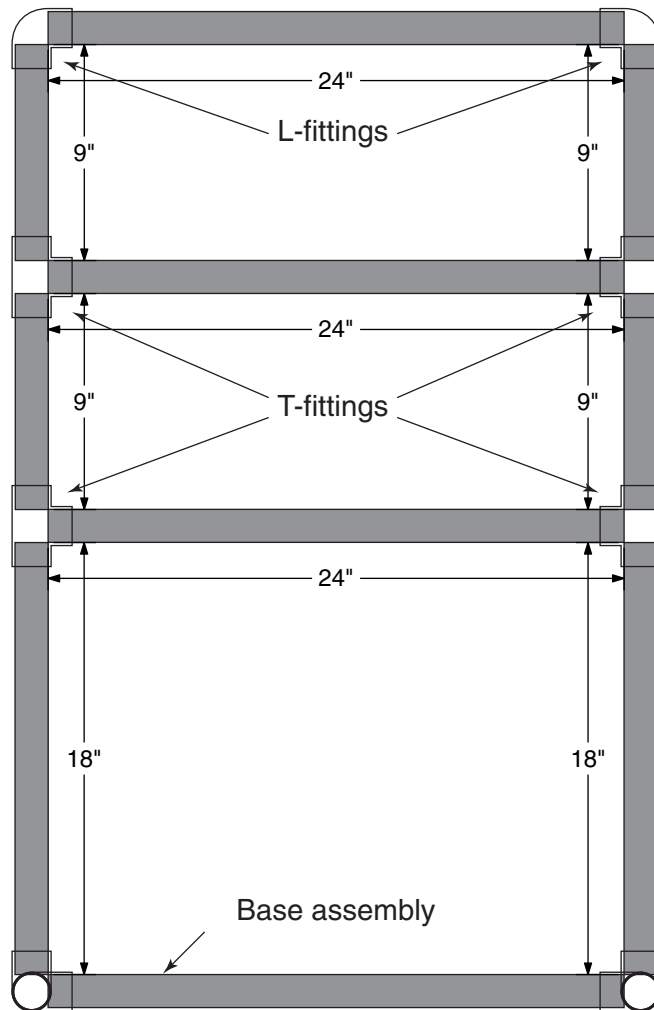


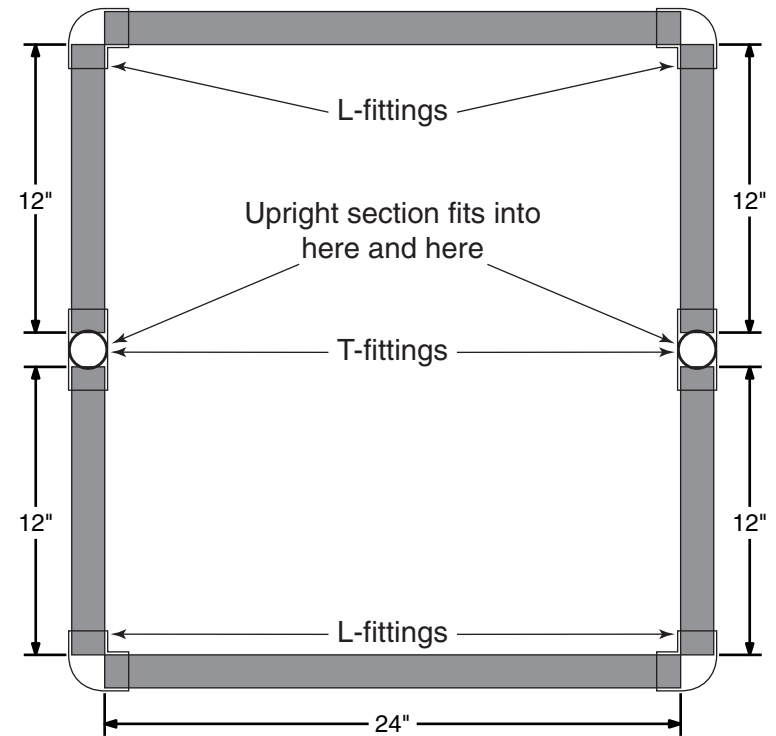
Upright



Use 1" ID PVC pipe and matching elbow & T-fittings.

- Parts List:
- 1" L-fittings --- 12
 - 1" T-fittings --- 12
 - 1" PVC Pipe --- 40' (4-10' sections)

Base



Start by cutting all pipe pieces, then fit them into the correct T or elbow fittings. Make sure that the measurements are accurate before cutting;

“Measure twice, cut once!”

Once you’re sure everything fits properly, the fittings can be bonded to the pipe.

For portability and storage, it may work best to keep the fittings where the uprights fit into the base loose.